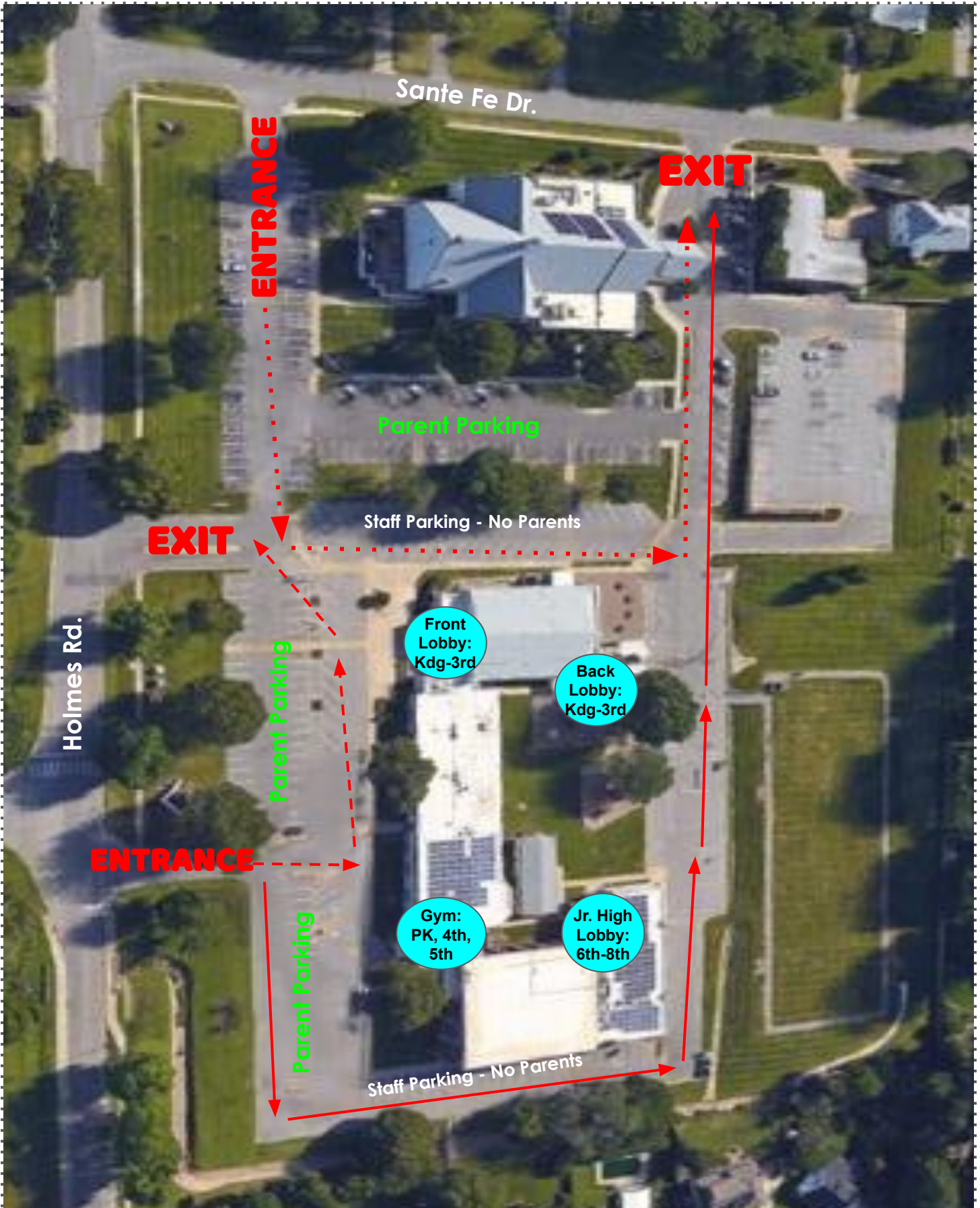
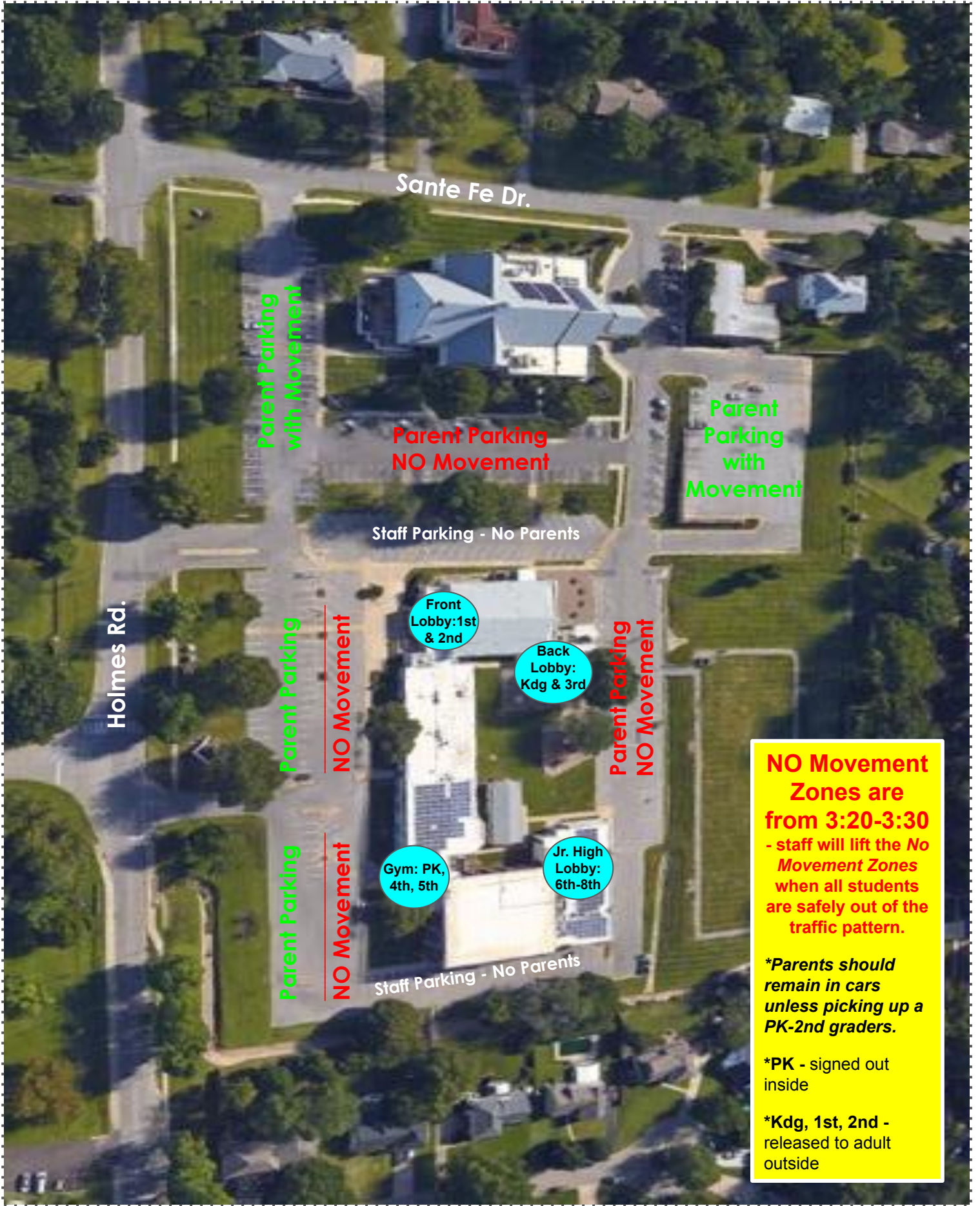


# STM MORNING TRAFFIC PATTERN





# STM AFTERNOON TRAFFIC PATTERN



**NO Movement Zones are from 3:20-3:30**  
- staff will lift the *No Movement Zones* when all students are safely out of the traffic pattern.

*\*Parents should remain in cars unless picking up a PK-2nd graders.*

*\*PK - signed out inside*

*\*Kdg, 1st, 2nd - released to adult outside*